



MEETING &

Meetings | Dinners | Parties

HOTEL NEW YORK

ROTTERDAM  BY WESTCORD

BOARDROOM PLATE

The Boardroom Plate is one of the former rooms of the board of the Holland America Line. It was named after Antoine Plate. He was one of the founders of this famous shipping company.

This room is situated on the first floor and exudes a sense of authenticity thanks to a fireplace, beautiful carpets and wooden panelling.

Situated on the Meuse riverside of the hotel, this room offers a gorgeous view of Rotterdam's skyline. The room still has all the grandeur of times gone by and is perfect for smaller, more intimate business meetings and private get-togethers.

Suitable for: Dinner, Lunch, Meeting

Room dimensions: Surface area: 45 m²

Height: 4.4 m

Width: 6 m

Length: 7.3 m

Room capacity: Capacity: Up to 16 people

Room features: Air conditioning

Natural daylight

Private restroom

Free Wi-Fi

Parking available

Possible layouts: Boardroom setup: 16 people (see photo below)



Boardroom

BOARDROOM REUCHLIN

The Boardroom Reuchlin is one of the former rooms of the board of the Holland America Line. It was named after Otto Reuchlin, one of the founders of this famous shipping company.

This room is situated on the first floor and exudes a sense of authenticity thanks to a fireplace, beautiful carpets and wooden panelling. Situated at the front of Hotel New York, this room offers a fine view of the Nieuwe Waterweg. The room still has all the grandeur of times gone by and is perfect for smaller, more intimate business meetings and private get-togethers.

Suitable for:	Wedding, Lunch, Dinner, Meeting
Room dimensions:	Surface area: 60 m ² Height: 4 m Width: 5.7 m Length: 10.5 m
Room capacity:	Capacity: Up to 24 people
Room features:	Air conditioning Natural daylight Private restroom Free Wi-Fi Parking available
Possible layouts:	Boardroom setup: 24 people (see photo below)



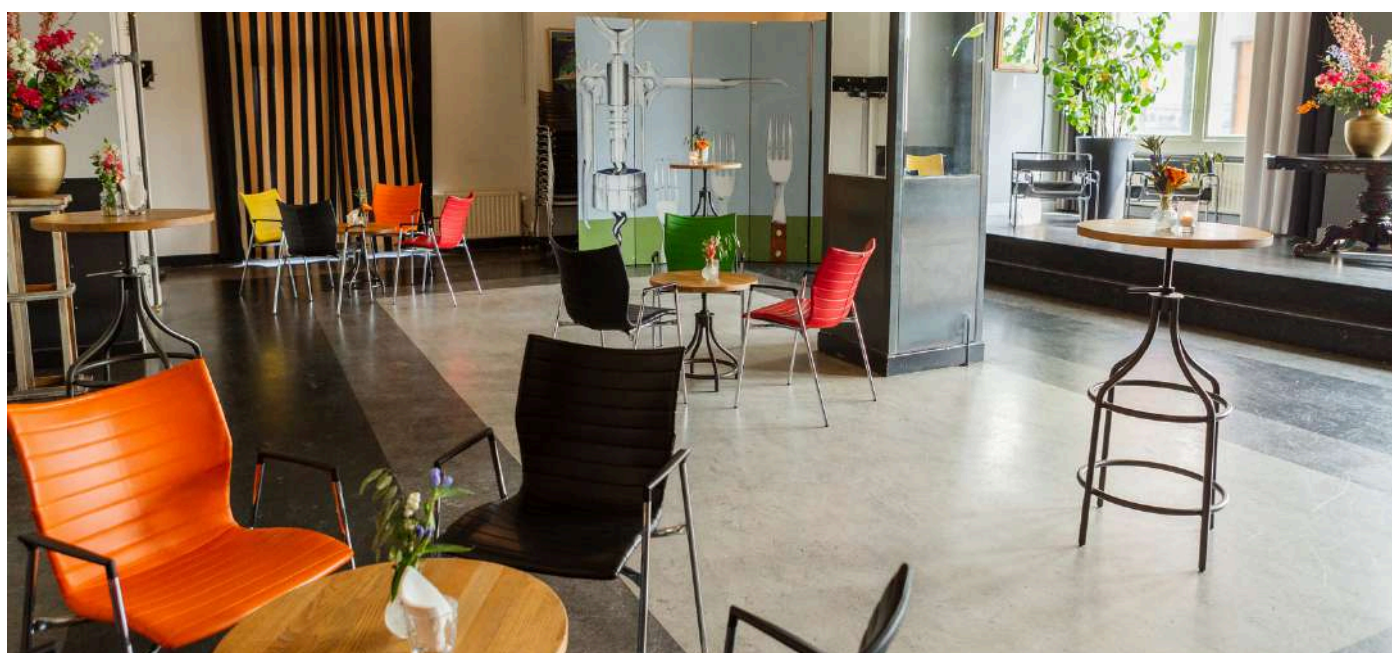
Boardroom

TUSCHINKSI I

The Tuschinski I room is situated at the back of Hotel New York, facing the Rhine harbour. This room has approximately the same dimensions as the Library. It is named after the famous Polish immigrant Abraham Tuschinski. The room also features a permanent stage, for live music or presentations. It offers a partial view of the Rhine harbour and Katendrecht, the up-and-coming trendy neighbourhood in the south of Rotterdam.

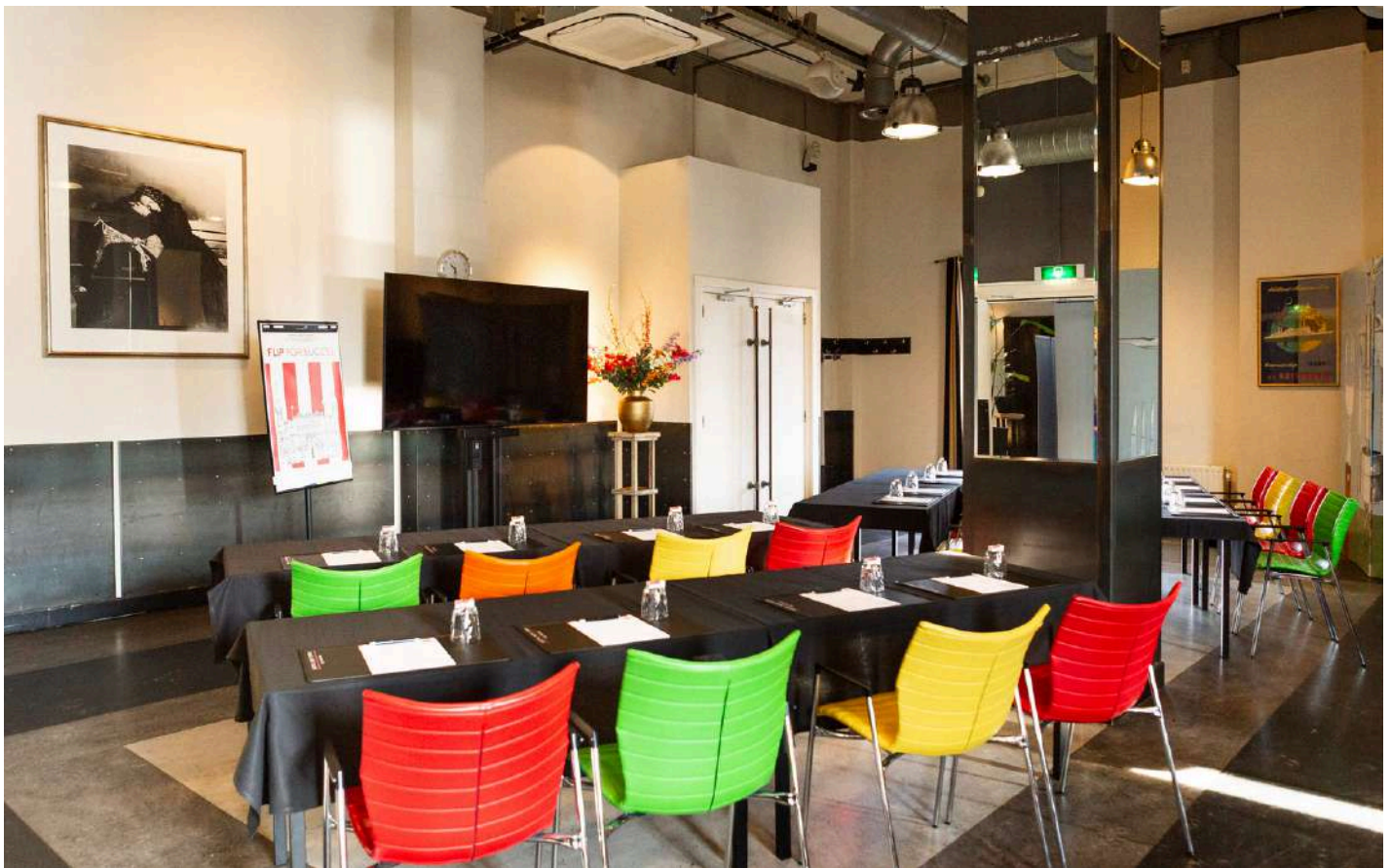
Thanks to its black furniture, the Tuschinski I room has a somewhat sleeker look than our other rooms. This room is popular with business visitors as well as private guests, and ideally suited to for example a (wedding) dinner at beautiful round tables for up to 56 persons.

Suitable for:	Wedding, Dinner, Event, Meeting
Room dimensions:	Surface area: 95 m ² Height: 3.8 m Width: 10 m Length: 11.5 m
Room capacity:	Capacity: Up to 80 people
Room features:	Air conditioning Natural daylight Free Wi-Fi Parking available
Possible layouts:	Possible layouts: Reception: 80 people (p. 4) Dinner: 56 people (p. 5) Classroom: 32 people (p. 5) Cabaret: 30 people (p. 6) Boardroom: 22 people (p. 7) Carré: 22 people (p. 8)





Large round tables



School



Cabaret



Boardroom



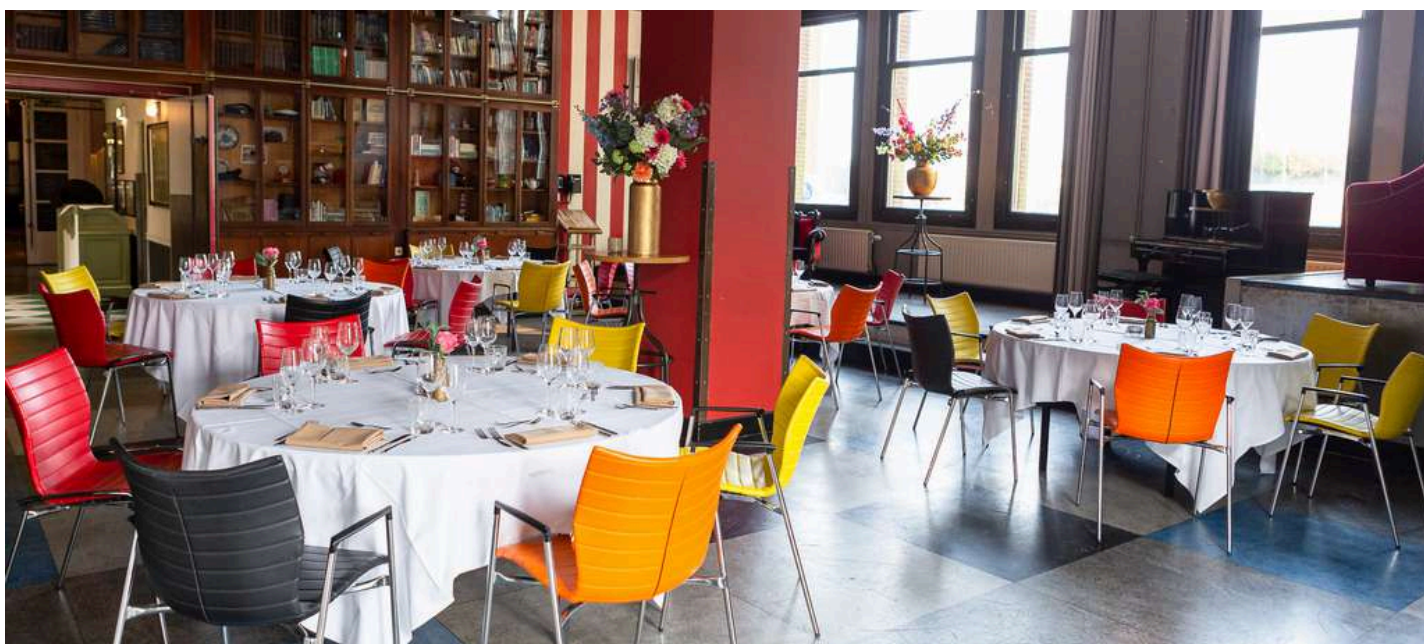
Carrè

BIBLIOTHEEK

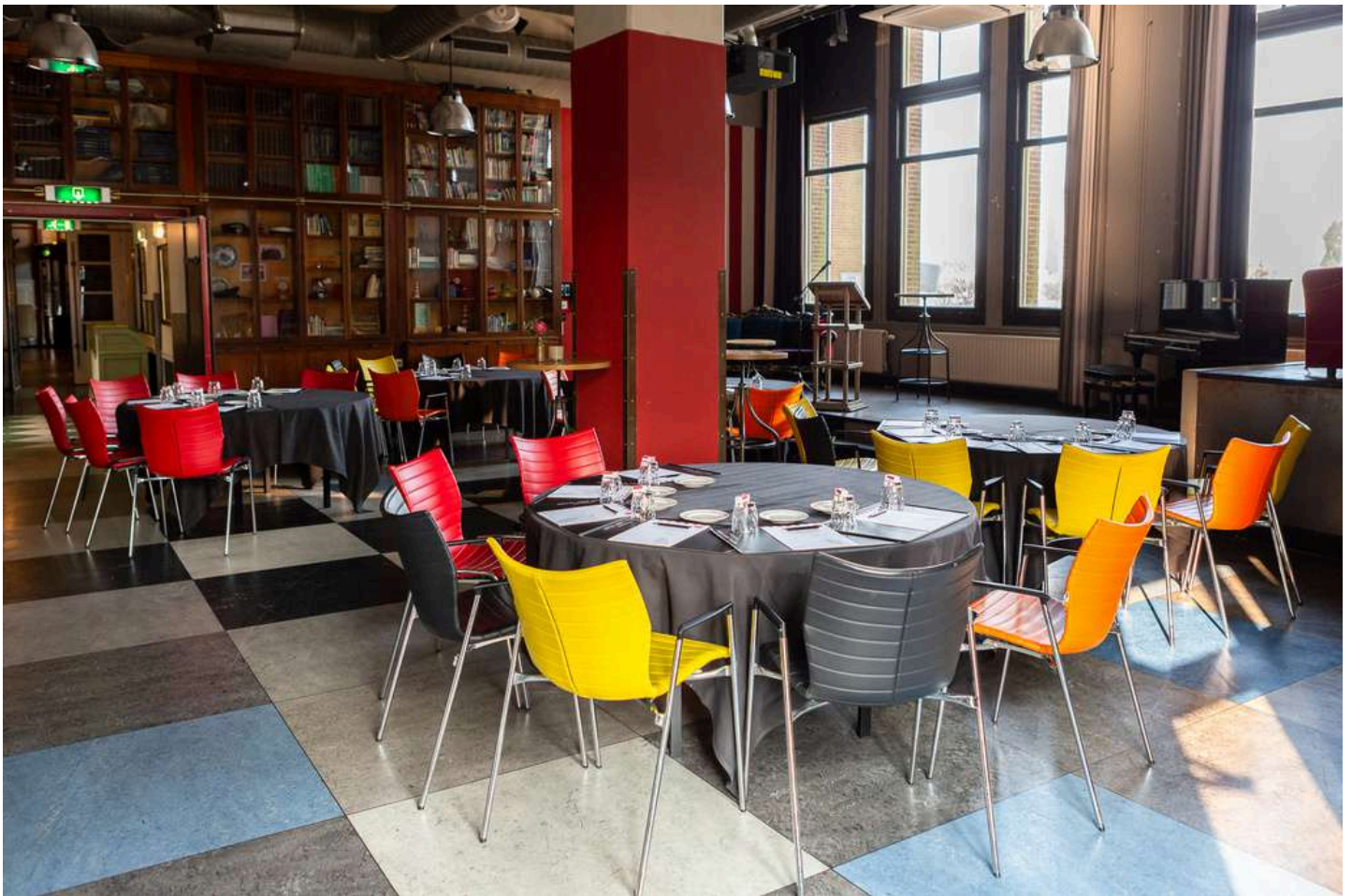
The Bibliotheek 'Library' is situated at the back of Hotel New York, facing the Meuse. It's a medium-sized, warm, colourful room with bookcases reaching to the ceiling. These authentic bookcases are filled with books and other materials from the Holland America Line days. The room also features a permanent stage, for live music or presentations.

The room has a partial view of the Meuse and the Rotterdam skyline. Many private guests enjoy having lunch, dinner or drinks in the Bibliotheek because of its cosy atmosphere. Business guests can hold meetings and presentations here that will be just a little bit special because of the unusual atmosphere.

Suitable for:	Wedding, Dinner, Event, Meeting
Room dimensions:	Surface area: 84 m ² Height: 3.7 m Width: 9.5 m Length: 11 m
Room capacity:	Capacity: Up to 80 people
Room features:	Air conditioning Natural daylight Wi-Fi Parking available
Possible layouts:	Possible layouts: Large round tables: 56 people (p. 8) Cabaret: 30 people (p. 9) Reception: 80 people (p. 9) Theatre: 60 people (p. 10) Boardroom: 22 people (p. 10) Carré: 22 people (p. 11)



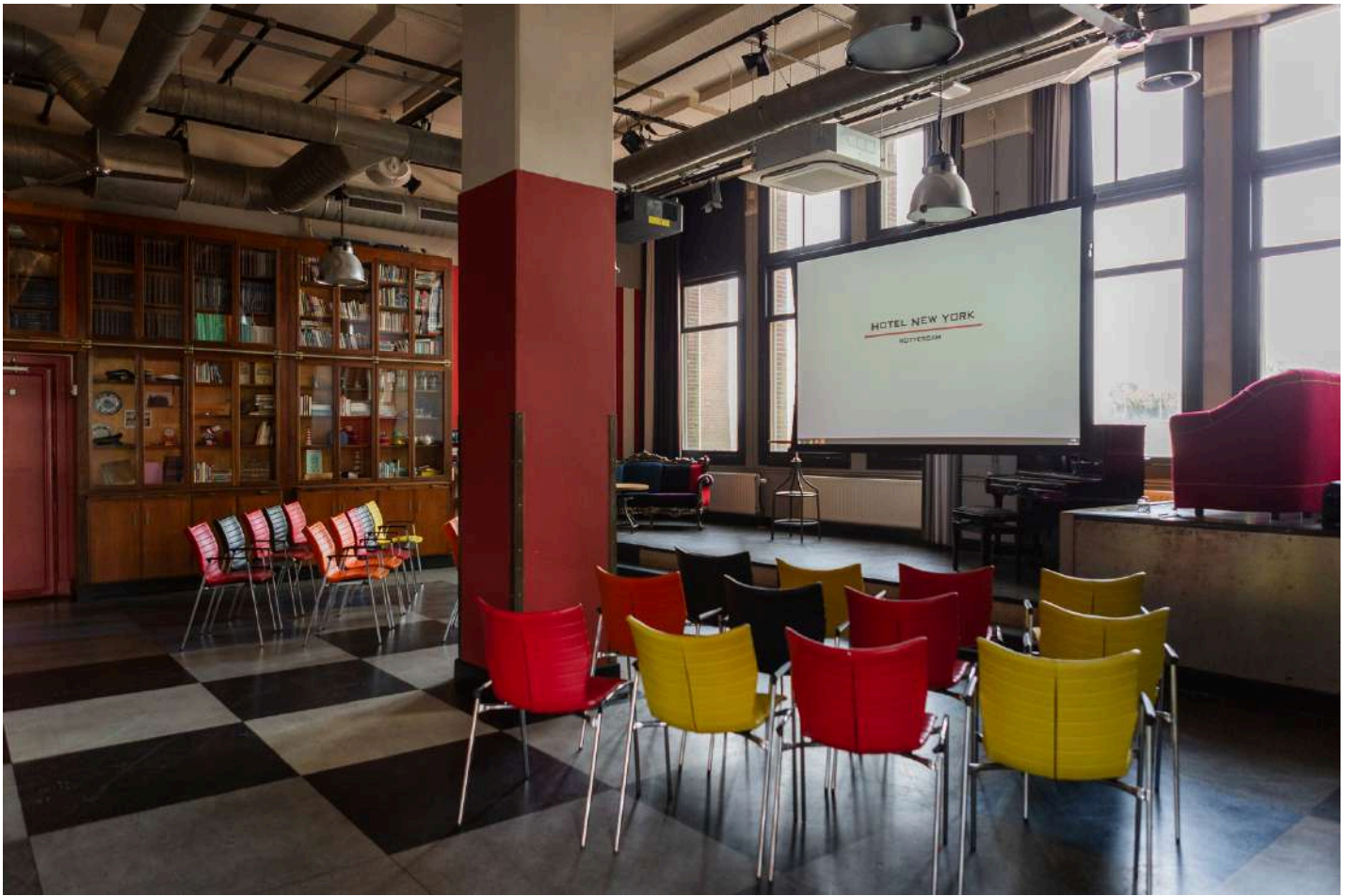
Diner



Cabaret



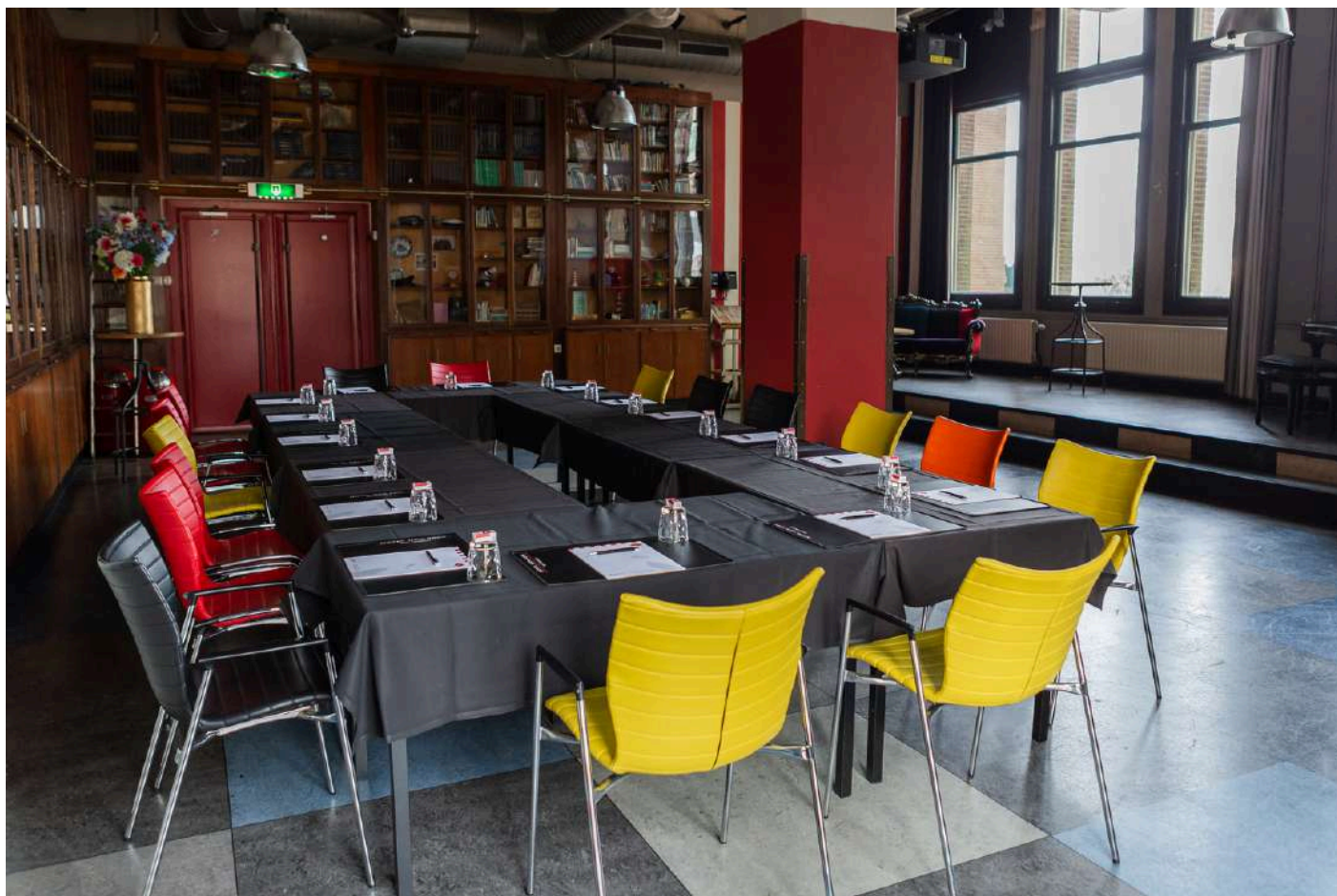
Reception



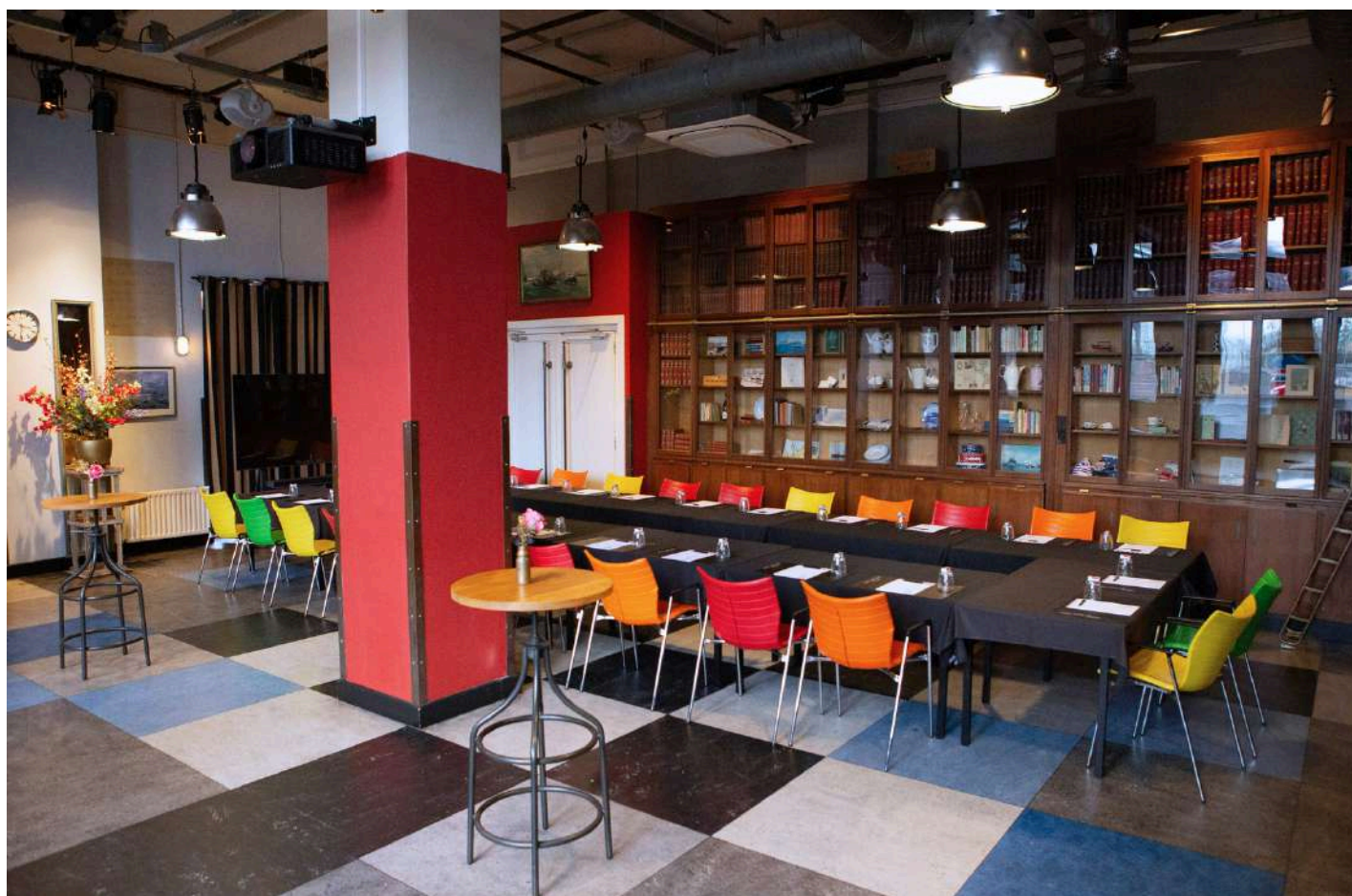
Theatre



Boardroom



Carrè



U-form

BALSZAAL

It is an atmospheric room, thanks to chandeliers, wooden floors and tall windows offering a view of the Meuse river. There is also a giant map painted on the wall, showing the route taken by the Holland America Line's ships when travelling from Rotterdam to New York.

This room is eminently suited to large business meetings and festive occasions. Thanks to the tall windows, the room gets plenty of natural light and provides a grand view of the Euromast – Rotterdam has never looked better! Imagine getting married in this location, from which thousands of emigrants once embarked for America... The Balszaal is Hotel New York's largest meeting room.

Suitable for: Wedding, Dinner, Event, Meeting

Room dimensions: Surface area: 135 m²

Height: 3.5 m

Width: 15.8 m

Length: 11 m

Room capacity: Capacity: Up to 125 people

Room features: Private bar

Air conditioning

Natural daylight

Free Wi-Fi

Parking available

Possible layouts: Possible layouts:

Cabaret: 80 people (p. 12)

U-shape: 40 people (p. 13)

Reception: 120 people (p. 13)

Boardroom: 36 people (p. 14)

Classroom: 32 people (p. 14)



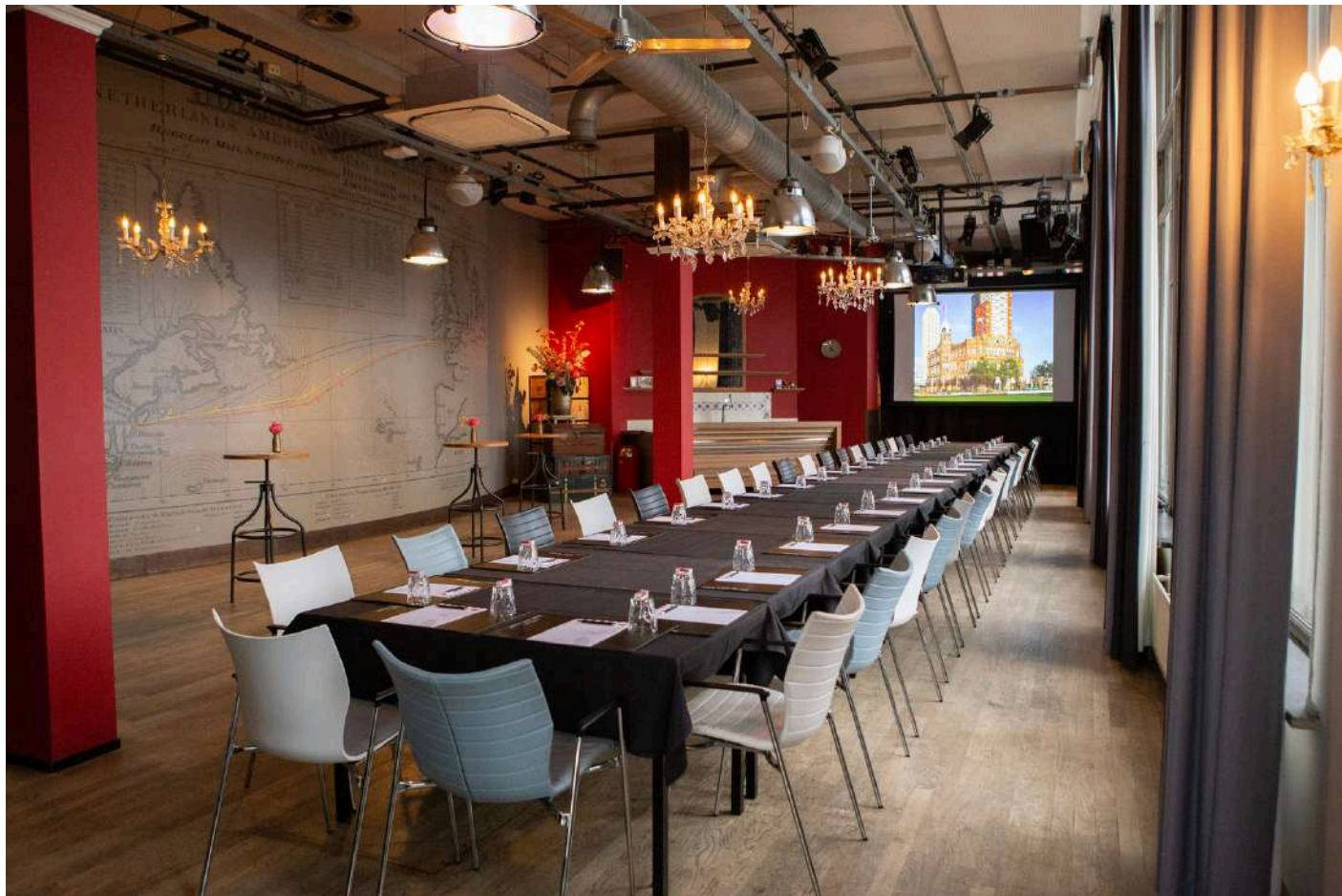
U-form



Cabernet



Reception



Boardroom



School

BLAUWE ZAAL

The Blauwe zaal is a colourful and intimate room situated on the ground floor, at the back of the hotel. It is situated between two other rooms and offers a view of the Wilhelmina pier.

Thanks to its intimate atmosphere, this room is perfect for smaller groups. There are connecting doors between the Blauwe zaal and the Bibliotheek.

Suitable for:	Wedding, Dinner, Meeting
Room dimensions:	Surface area: 55 m ² Height: 3.8 m Width: 5 m Length: 11.5 m
Room capacity:	Capacity: Up to 40 people
Room features:	Air conditioning Natural daylight Free Wi-Fi Parking available
Possible layouts:	Possible layouts: Large round tables: 32 people (p. 15) Carré: 20 people (p. 16) Classroom: 20 people (p. 16) Reception: 40 people (p. 17) U-shape: 20 people (p. 17)





Carré



School



Reception



U-form